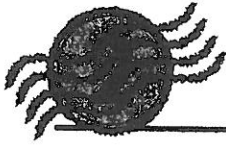


SECTION QUIZ



The Incas

Key

Th

A. Key Terms and Concepts

Directions: Fill in the blanks in Column I with the terms in Column II. Write the correct letter in each blank.

Column I

Column II

- | | |
|--|---|
| <p><u>e</u> 1. The Incan capital was ____.</p> <p><u>a</u> 2. The Incan language, ____, was the empire's official language.</p> <p><u>d</u> 3. Important information, such as births and deaths, was recorded on a(n) ____.</p> <p><u>c</u> 4. By cutting a steplike ledge, or ____, into the mountain, an Incan farmer kept the soil from washing away.</p> <p><u>b</u> 5. The ruler of the Incan empire was called the ____.</p> | <p>a. Quechua</p> <p>b. Sapa Inca</p> <p>c. terrace</p> <p>d. quipu</p> <p>e. Cuzco</p> |
|--|---|

B. Main Ideas

Directions: Write the letter of the correct answer in each blank.

- a 6. What is one way in which Incan rulers unified their empire?
- | | |
|--|---|
| a. They educated conquered peoples. | c. They sent out daily written reports |
| b. They included conquered people in government decisions. | d. They learned the customs of conquered peoples. |
- c 7. What is one important achievement of the Incas?
- | | |
|--------------------------------------|----------------------------------|
| a. a written language | c. a system of roads and bridges |
| b. a system of democratic government | d. an accurate calendar |
- b 8. What did Incan runners do?
- | | |
|---|-------------------------------------|
| a. prepare sacrifices to the gods | c. make up stories |
| b. carry messages to and from the capital | d. divide the land among the people |
- c 9. What is one way in which the Incas increased their farmlands?
- | | |
|--|--|
| a. They developed crops suited to the dry lands. | c. They irrigated dry lands with canals and aqueducts. |
| b. They built floating gardens. | d. They flattened the mountains. |
- d 10. In exchange for the people's taxes, the Incan government cared for
- | | |
|--------------------------|---|
| a. artisans. | c. conquered people. |
| b. government officials. | d. the poor, the sick, and the elderly. |